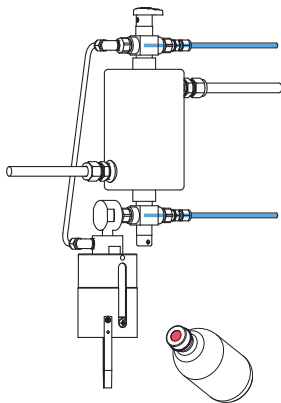


The ability to purge the sample point ensures optimal retrieval of a representative, contamination free sample. The S23 type sampler with cooling/heating jacket provides a system purge and a fixed sample volume at the required temperature.

A separate cooler/heater is therefore not necessary. No vent connection is needed. The vent is connected to the top valve. This way a loop is created in order to fill the bottle by means of gravity.

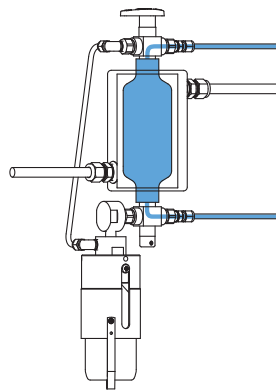
The unique design offers a one handle operation by multiple valves, allowing for sampling independent of the process conditions. These features provide sample accuracy and safety.

**1 OPERATION/FUNCTION**



**0 - off**

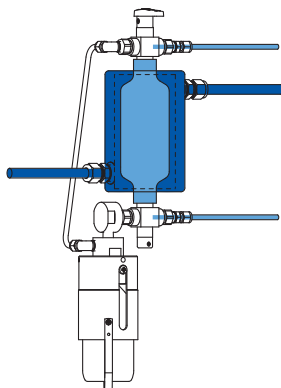
Provide a new septum on your sample bottle. Insert the bottle, with cap and septum into the sleeve until the septum is pierced by the needles. Put the bottle retaining clip in place.



**1 - system purge**

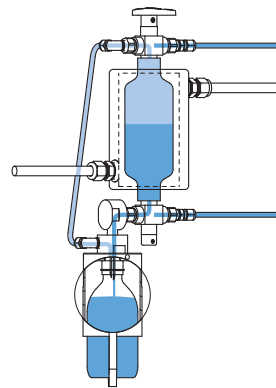
Turn the handle to the "bypass" position, allowing a continuous flow of liquid through the sampler to ensure representative sampling.

This position can be held for any required time.



**2 - off - cooling/heating**

Turn the handle to the "off" position and allow a cooling/heating fluid to flow through the jacket. Keep this position for the required time in order to cool/heat the liquid to the required temperature.

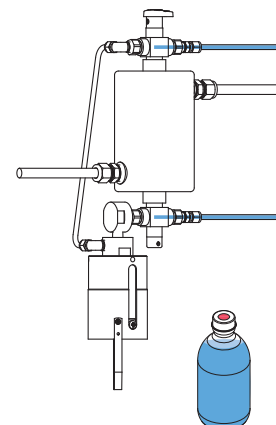
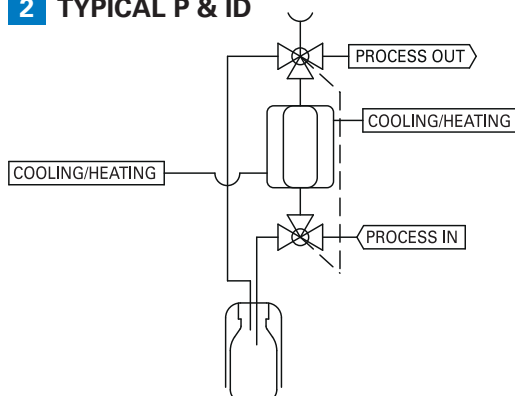


**3 - sample**

Turn the handle to the "sample" position allowing the product to flow into the sample bottle.

The fixed volume sample chamber determines the amount of sample. This position can be held for any required time.

**2 TYPICAL P & ID**



**4 - off**

Turn the handle to the "off" position. Remove the bottle retaining clip and pull the bottle out from the sleeve. The septum reseals automatically.

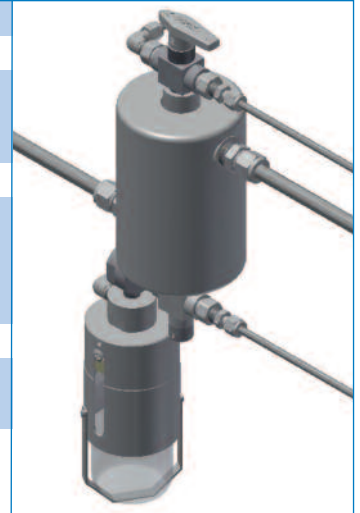


### 3 FEATURES/ADVANTAGES/PROPERTIES

- |   |  |
|---|--|
| <input type="checkbox"/> Sampling independent of process conditions | <input type="checkbox"/> Closed sampling               |
| <input type="checkbox"/> High pressure and vacuum applications      | <input type="checkbox"/> One handle operation          |
| <input type="checkbox"/> Representative sampling                    | <input type="checkbox"/> Fixed volume sampling         |
| <input type="checkbox"/> Zero dead volume                           | <input type="checkbox"/> Cooling/heating of the sample |

### 4 BASIC SPECIFICATIONS

<b>Material</b>	SS316, SS316L.
<b>Sleeve type</b>	60cc sleeve with bottle retaining clip.
<b>Needle assembly</b>	Single piece VTO needle assembly with vent connected to top valve. Process/vent needle ID: 3.00 mm.
<b>Sample chamber</b>	50cc.
<b>Valve</b>	Three-way ball valve type W83. PTFE seats, Viton A O-rings. Pressure range 103 bar @ 20°C (1500 psig @ 70°F). Temperature range -17/+232°C (0/+450°F).
<b>Operation</b>	Manual.
<b>Connections</b>	1/4" FNPT. Cooling in/out: 1/2" FNPT.
<b>Please note:</b>	the above is a basic specification only. DOPAK® Samplers can be offered with a wide variety of options as mentioned below.



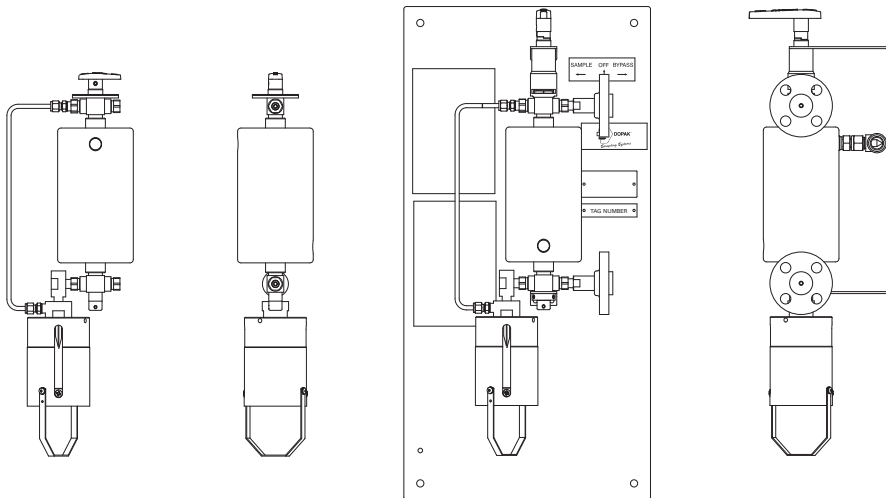
### 5 OPTIONS

- |   |   |
|---|---|
| <input type="checkbox"/> Spring return handle | <input type="checkbox"/> Mounting bracket           |
| <input type="checkbox"/> Lockable handle      | <input type="checkbox"/> Steam sterilising cap      |
| <input type="checkbox"/> Mounting plate       | <input type="checkbox"/> Welded connections         |
| <input type="checkbox"/> Pipe stand           | <input type="checkbox"/> Exotic materials           |
| <input type="checkbox"/> Block valve          | <input type="checkbox"/> Larger/smaller sample size |
| <input type="checkbox"/> Flow meter           | <input type="checkbox"/> Temperature indicator      |
| <input type="checkbox"/> Enclosure            |   |

For more information please refer to our sheets:

**Options for DOPAK® process samplers, sampling into a bottle.**

**Components for DOPAK® process samplers.**



#### Dopak Inc.

Houston, Texas 77041, USA  
Phone 713-460-8311  
Fax 713-460-8578  
E-mail info@dopak.com

#### Dovianus BV

Bergschenhoek, The Netherlands  
Phone +31 10 524 20 00  
Fax +31 10 524 20 29  
E-mail info@dopak.nl

Your local representative:

