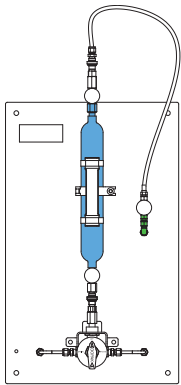


The Dopak CES offers the ability to empty a cylinder containing (Liquefied) Gas without the risk of spillage or contamination.

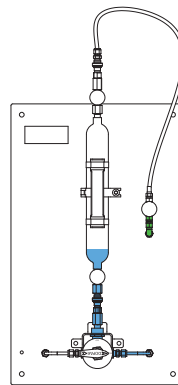
Applications for this system can be found in plant laboratories.

1 OPERATION/FUNCTION



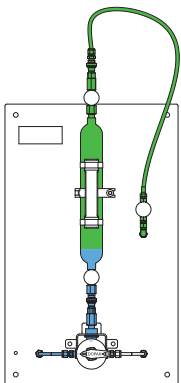
0 - off

Install the sample cylinder by connecting the quick connects.



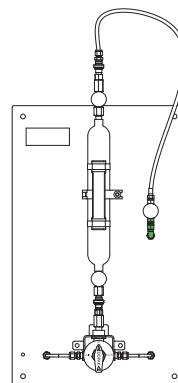
1 - analyse

Open the bottom needle valve of the cylinder. Turn the handle to the analyse position, allowing the product to flow to the analyser. When the required amount has been taken, turn the handle to the "off" position.



2 - drain

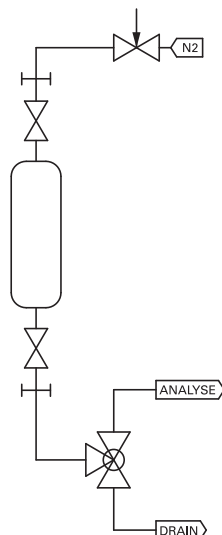
Open the top needle valve of the cylinder and the purge needle valve. Turn the handle to the "drain" position, allowing a flow of purge gas through the cylinder to ensure any residual liquid is removed from the cylinder. This position can be held for any required time.



3 - off

Close the purge needle valve and turn the handle to the "off" position. Close both needle valves of the cylinder. Disconnect the quick connects and remove the sample cylinder.

2 TYPICAL P & ID



Cylinder Emptying System (J1)

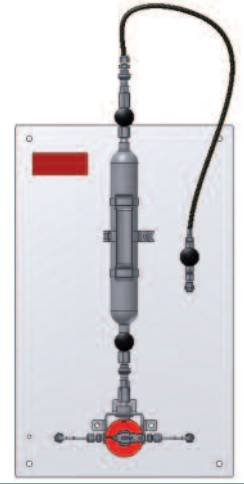


3 FEATURES/ADVANTAGES/PROPERTIES

- Closed emptying/no spillage
- Depressurising of quick connect couplings

4 BASIC SPECIFICATIONS

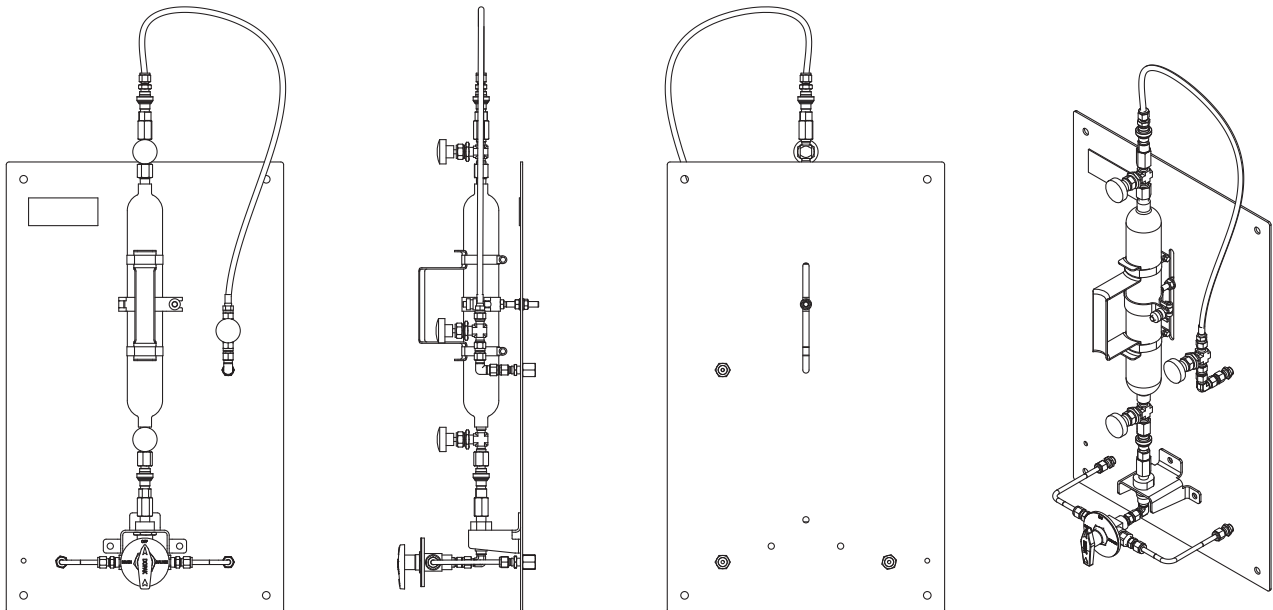
Material	SS316, SS316L.
Cylinder type	500cc cylinder.
Valve	<p>N2 purge: Needle valve. PFA seats. Pressure range 103 bar @ 20°C (1500 psig @ 70°F). Temperature range -54/+232°C (-65/+450°F).</p> <p>Drain/analyse: Three-way ball valve type W83. PTFE seats, Viton A O-rings. Pressure range 103 bar @ 20°C (1500 psig @ 70°F). Temperature range -17/+232°C (0/+450°F).</p>
Operation	Manual.
Connections	to cylinder: quick connect couplings. to drain/analyse: 1/4" FNPT. to purge: 1/4" FNPT.
Please note:	the above is a basic specification only. DOPAK® Samplers can be offered with a wide variety of options as mentioned below.



5 OPTIONS

- Flow meter
- Pressure indicator
- Enclosure
- Sample cooler
- Mounting brackets
- Exotic materials
- Temperature indicator
- Custom made frame
- Larger/smaller sample size

For more information please refer to our sheets:
Components for DOPAK® process samplers.



Dopak Inc.
 Houston, Texas 77041, USA
 Phone 713-460-8311
 Fax 713-460-8578
 E-mail info@dopak.com

Dovianus BV
 Bergschenhoek, The Netherlands
 Phone +31 10 524 20 00
 Fax +31 10 456 67 74
 E-mail info@dopak.nl

Your local representative:

